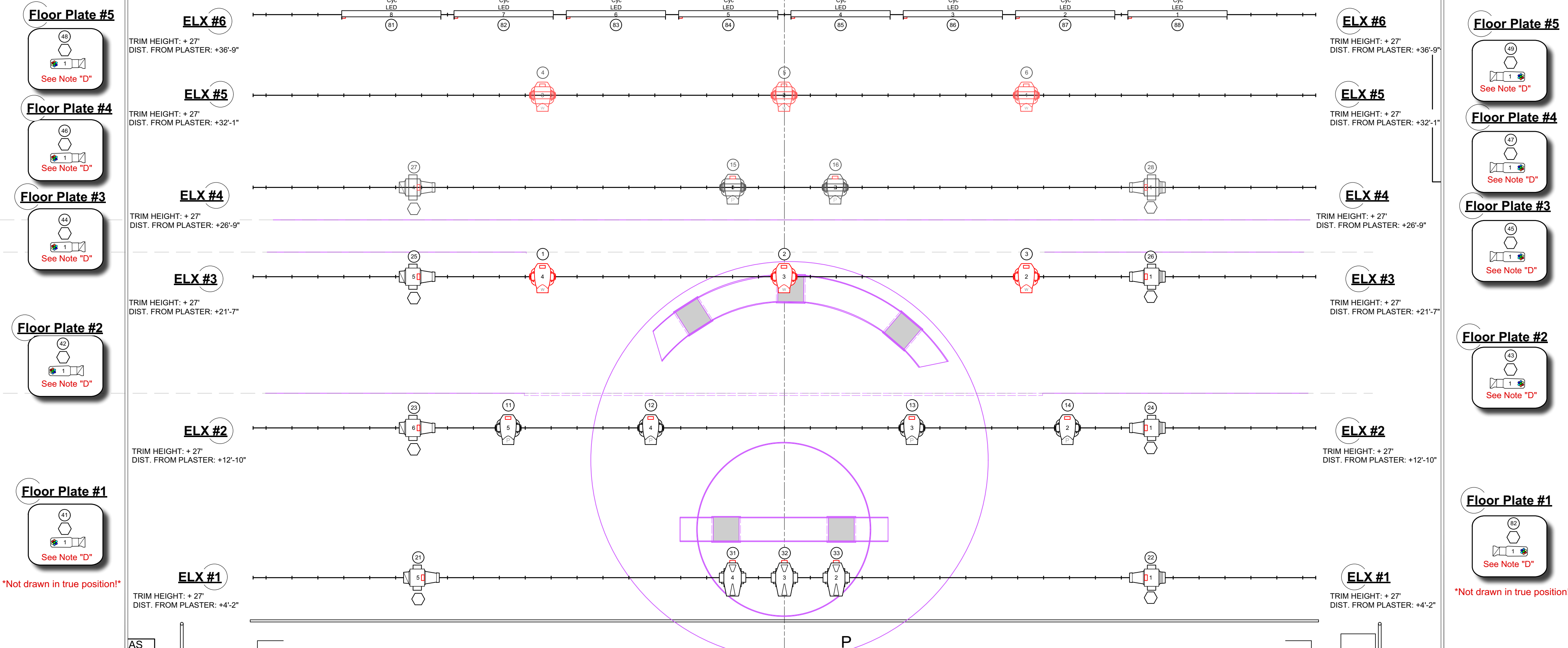


LR	Purpose	Dist from PL
45	BOUNCE	38'-1"
44	44	37'-9"
43	ELX 6	36'-9"
42	42	36'-1"
41	SHY RP	35'-6"
40	LEG #5	35'-9"
39	BLACK DROP	36'-1"
38	38	33'-6"
37	37	32'-9"
36	36	32'-1"
35	35	31'-6"
34	LEG #4	30'-7"
33	BOARDER 4	29'-11"
32	32	28'-3"
<b>SHELL C</b>		
31	ELX 4	28'-9"
30	30	26'-3"
29	29	25'-7"
28	RP SCREEN	24'-11"
27	LEG #3	24'-5"
26	BOARDER 3	23'-7"
25	PORTAL 2	23'-7"
24	24	22'-3"
23	ELX 3	21'-7"
22	22	20'-11"
21	LEG #2	20'-4"
<b>SHELL B</b>		
20	BOARDER 2	17'-4"
19	19	16'-10"
18	18	16'-1"
17	17	15'-6"
16	PORTAL 1	14'-10"
15	15	14'-2"
14	14	13'-5"
13	EXL 2	12'-10"
12	12	12'-2"
11	LEG #1	11'-5"
10	BOARDER 1	10'-8"
9	9	10'-0"
8	8	9'-4"
<b>SHELL A</b>		
7	6'-2"	
6	6'-2"	
5	5'-0"	
4	4'-10"	
3	ELX 1	4'-2"
2	3'-6"	
1	2'-8"	
	MAIN DRAPE	1'-8"
	VALENCE	1'-2"
	PLASTER LINE	



**Instrument Key**

	ETC Source4 14deg	4
	ETC Source4 19deg	6
	ETC Source4 26deg	2
	Etc Source 4 LEDLS 14°	11
	Etc Source 4 LED 19°	24
	Etc Source 4 LED 26°	12
	Colour Chorus 72	16
	High End Systems SolaSpot Frame 2000	6
	Varilite VL 1100 Arc ERS	4
	Varilite VL 1100 Tungsten Dimmer	4
	Varilite VL2600 Profile	6
	Varilite VL2600 Wash	6

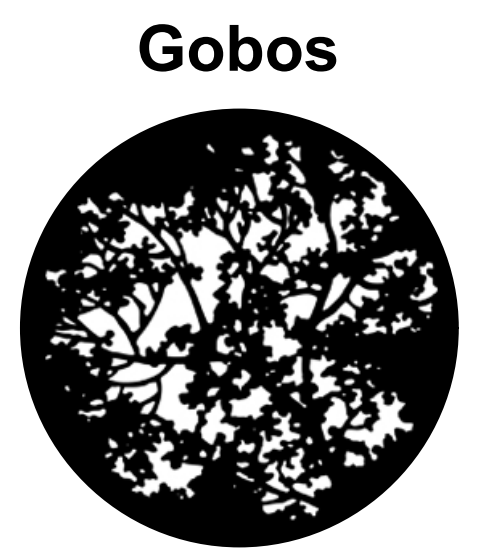
**General Notes:**

A: All "Skeleton Rep" fixture cables to be affixed to position with zip-ties for semi-permanent install.

B: Groundrow is placed on floor directly under line-set 43. Fixtures should line up with fixtures on ELX 6.

C: All box boom fixtures to be hung with top-hats.

D: All fixtures are not permanent to space



Gobo 1: Blossoms (77774)



Gobo 2: Linear 3 (77501)



Corbett Auditorium Fall 2020 Combined Rep Plot

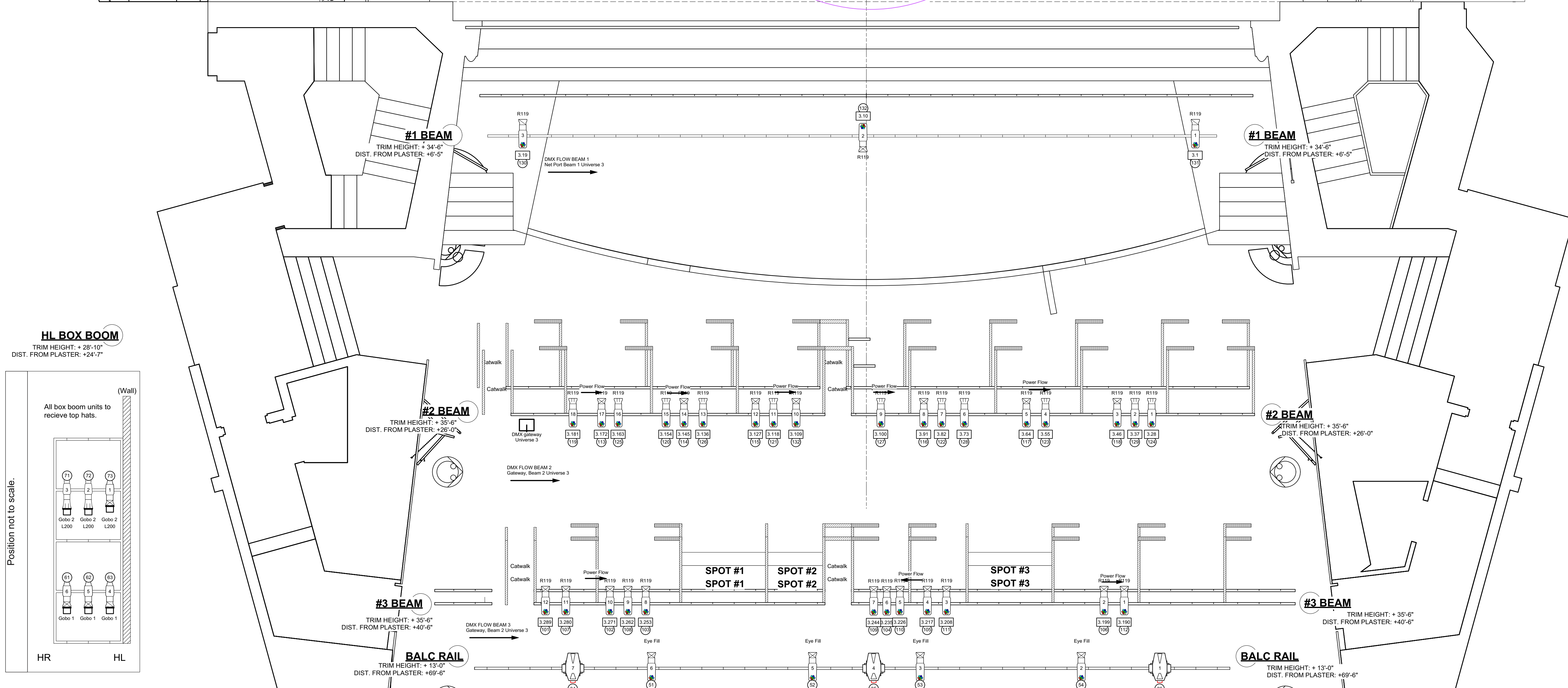
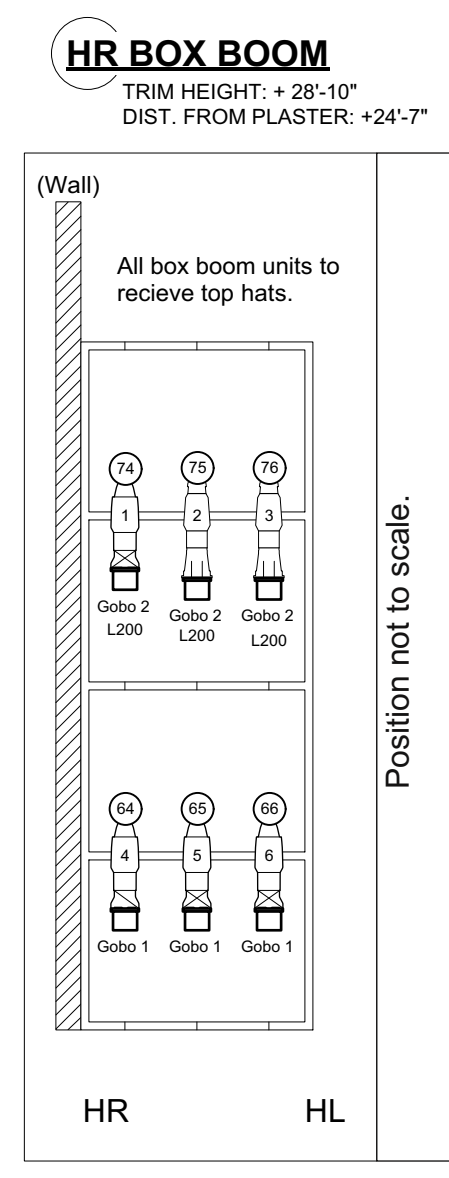
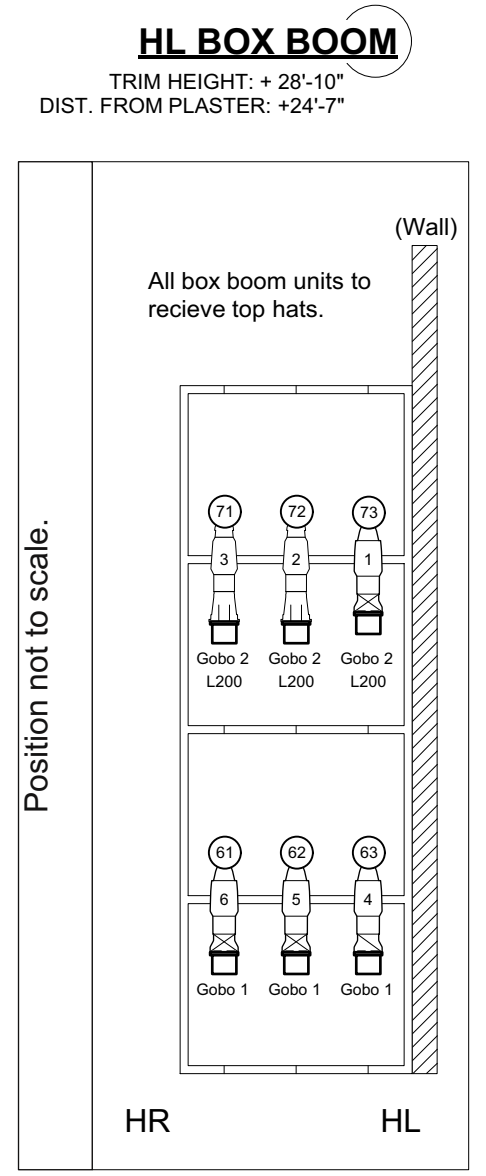
Lighting Designer: Alaina Pizzoferrato

Resident LD: Sharon Huizinga Resident ME: Greg Falcione

Drawn by: JWM&NSA Date: 12/16/20

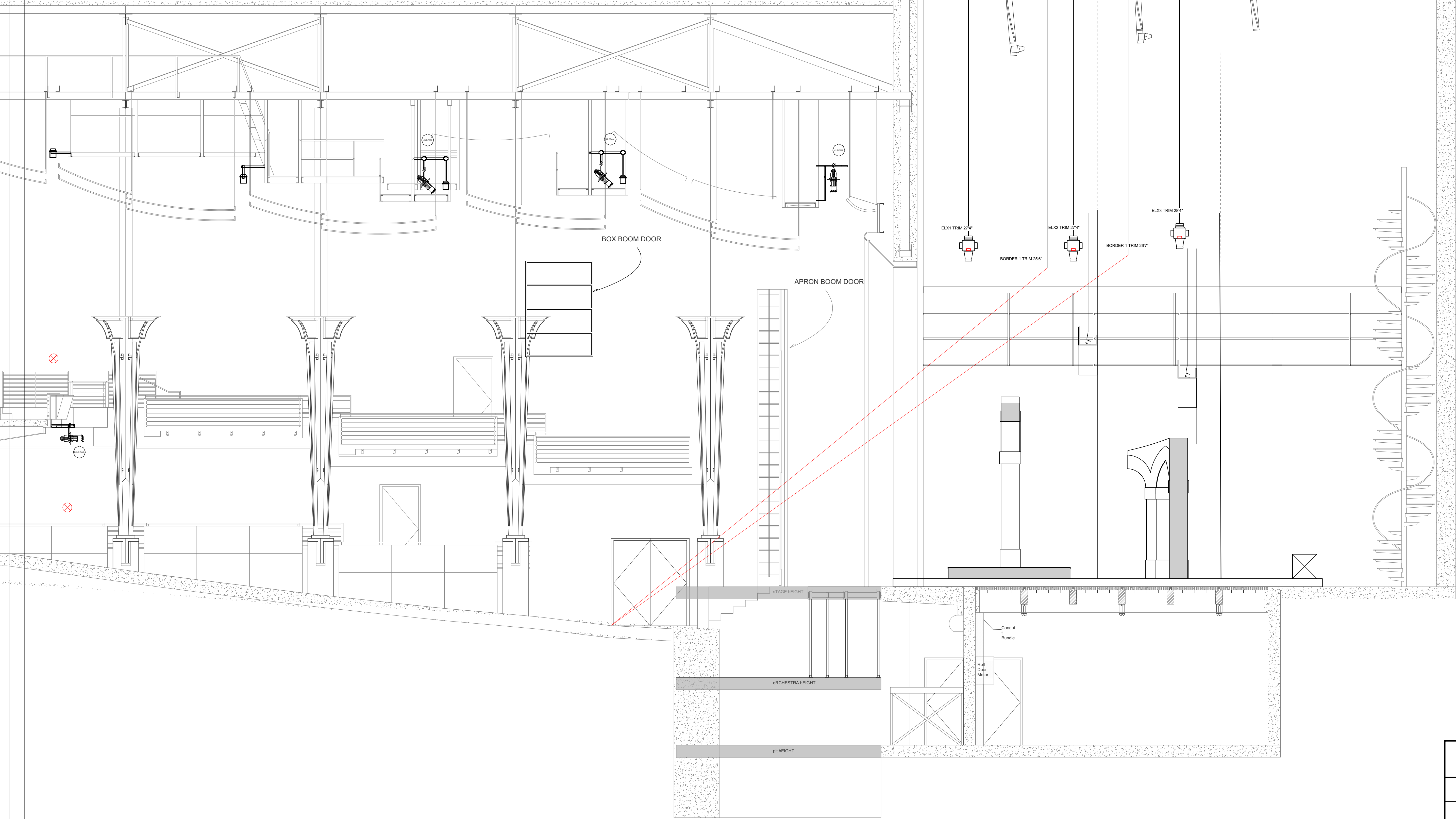
Scale: 1/4" = 1'

Plate 1 of 1



1	2	3	4	5	6	7	8	9	10	11	12	13	14	15	16	17	18	19	20
SHELL A										SHELL B									
PORTAL 1										PORTAL 2									
SHELL C										SHELL D									
PORTAL 3										PORTAL 4									
PORTAL 5										PORTAL 6									
PORTAL 7										PORTAL 8									
PORTAL 9										PORTAL 10									
PORTAL 11										PORTAL 12									
PORTAL 13										PORTAL 14									
PORTAL 15										PORTAL 16									
PORTAL 17										PORTAL 18									
PORTAL 19										PORTAL 20									
PORTAL 21										PORTAL 22									
PORTAL 23										PORTAL 24									
PORTAL 25										PORTAL 26									
PORTAL 27										PORTAL 28									
PORTAL 29										PORTAL 30									
PORTAL 31										PORTAL 32									
PORTAL 33										PORTAL 34									
PORTAL 35										PORTAL 36									
PORTAL 37										PORTAL 38									
PORTAL 39										PORTAL 40									
PORTAL 41										PORTAL 42									
PORTAL 43										PORTAL 44									
PORTAL 45										PORTAL 46									
PORTAL 47										PORTAL 48									
PORTAL 49										PORTAL 50									
PORTAL 51										PORTAL 52									
PORTAL 53										PORTAL 54									
PORTAL 55										PORTAL 56									
PORTAL 57										PORTAL 58									
PORTAL 59										PORTAL 60									
PORTAL 61										PORTAL 62									
PORTAL 63										PORTAL 64									
PORTAL 65										PORTAL 66									
PORTAL 67										PORTAL 68									
PORTAL 69										PORTAL 70									
PORTAL 71										PORTAL 72									
PORTAL 73										PORTAL 74									
PORTAL 75										PORTAL 76									
PORTAL 77										PORTAL 78									
PORTAL 79										PORTAL 80									
PORTAL 81										PORTAL 82									
PORTAL 83										PORTAL 84									
PORTAL 85										PORTAL 86									
PORTAL 87										PORTAL 88									
PORTAL 89										PORTAL 90									
PORTAL 91										PORTAL 92									
PORTAL 93										PORTAL 94									
PORTAL 95										PORTAL 96									
PORTAL 97										PORTAL 98									
PORTAL 99										PORTAL 100									

Max Batten Travel 55'-0"



<b>LIGHT IN THE PIAZZA</b>	
SECTION	Date : 2/15/2021
CORBETT AUDITORIUM	Scale : 1:48
Director : MARK HALPIN	1 OF 1
Designer : ALAINA PIZZOFERRATO	
Revisions :	